

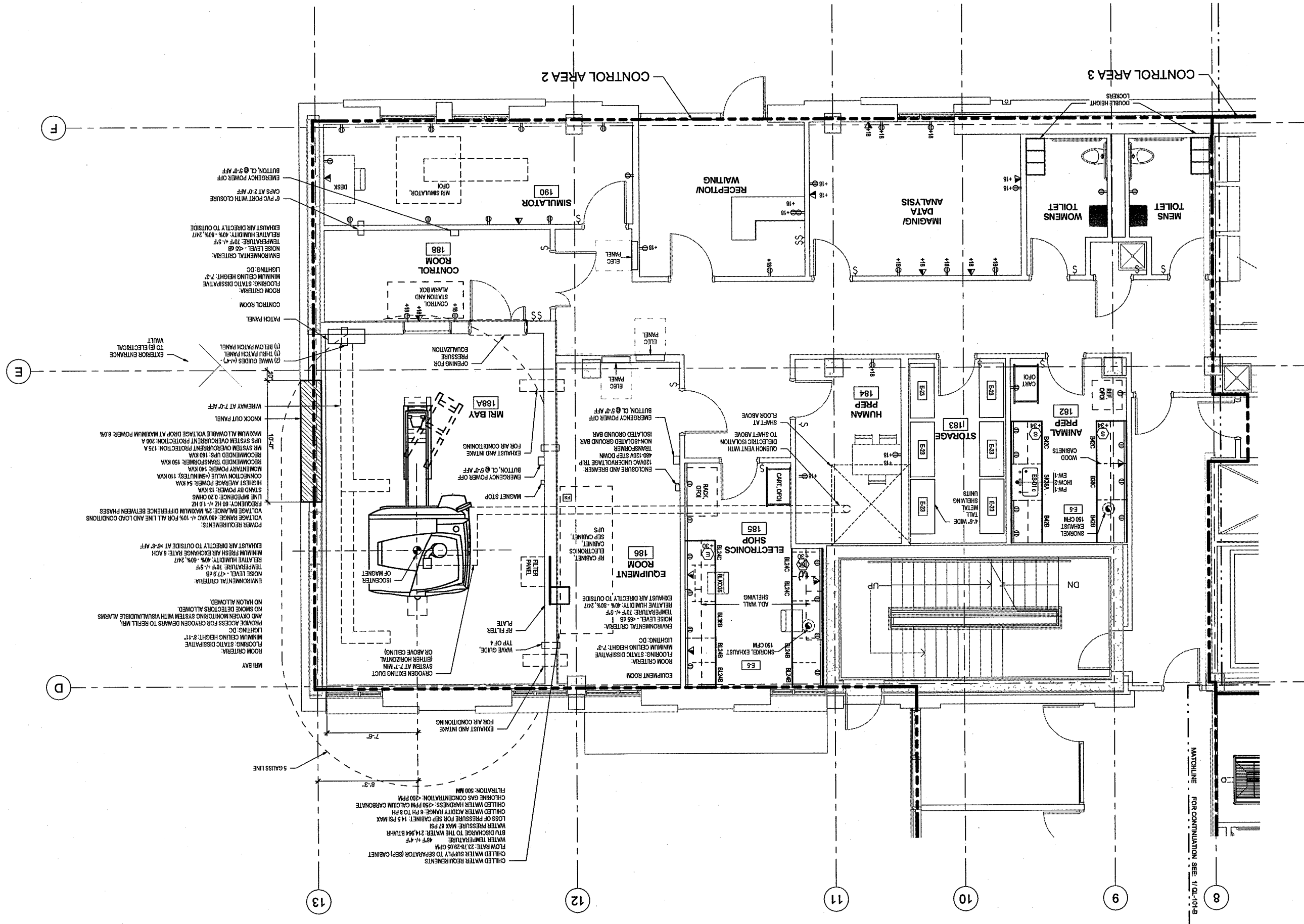
* No Closers on internal doors this suite

[Handwritten scribble]

ENVIRONMENTAL CRITERIA:
 ROOM CRITERIA:
 FLOORING: STATIC DISSIPATIVE
 MINIMUM CEILING HEIGHT: 8'-11"
 LIGHTING: DC
 PROVIDE ACCESS FOR GYROGEN DEWARS TO REFILL MRI.
 AND OXYGEN MONITORING SYSTEM WITH VISUAL/AUDIBLE ALARMS.
 NO SMOKE DETECTORS ALLOWED.
 NO HAZON ALLOWED.
ENVIRONMENTAL CRITERIA:
 NOISE LEVEL: <77.9 dB
 TEMPERATURE: 70°F +/- 5°F
 RELATIVE HUMIDITY: 40% - 80% 24/7
 MINIMUM FRESH AIR EXCHANGE RATE: 6 ACH
 EXHAUST AIR DIRECTLY TO OUTSIDE AT <6.5°F AFB
POWER REQUIREMENTS:
 VOLTAGE BALANCE: 2% MAXIMUM DIFFERENCE BETWEEN PHASES
 FREQUENCY: 60 HZ +/- 1.0 HZ
 LINE IMPEDANCE: 0.20 OHMS
 STAND BY POWER: 13 KVA
 HIGHEST AVAILABLE POWER: 54 KVA
 MOMENTARY POWER: 140 KVA
 RECOMMENDED TRANSFORMER: 150 KVA
 RECOMMENDED UPS: 180 KVA
 MR SYSTEM OVERCURRENT PROTECTION: 175 A
 UPS SYSTEM OVERCURRENT PROTECTION: 200 A
 MAXIMUM ALLOWABLE VOLTAGE DROP AT MAXIMUM POWER: 6.0%
 WIRING AT 7'-0" AFF
 KNOCK OUT PANEL
 (1) THRU PATCH PANEL
 (2) WAVE GUIDES (4-7)
 EXTERIOR ENTRANCE
 TO (E) ELECTRICAL
 VAULT
 CONTROL ROOM
 ROOM CRITERIA:
 FLOORING: STATIC DISSIPATIVE
 MINIMUM CEILING HEIGHT: 7'-3"
 LIGHTING: DC
 ENVIRONMENTAL CRITERIA:
 NOISE LEVEL: <55 dB
 TEMPERATURE: 70°F +/- 5°F
 RELATIVE HUMIDITY: 40% - 80% 24/7
 EXHAUST AIR DIRECTLY TO OUTSIDE
 6" PVC PORT WITH CLOSURE
 CAPS AT 2'-0" AFF
 EMERGENCY POWER OFF
 BUTTON, CL @ 5'-0" AFF

CHILLED WATER REQUIREMENTS
 CHILLED WATER SUPPLY TO SEPARATOR (SEP) CABINET
 FLOW RATE: 23.76 GPM @ 48°F +/- 4°F
 WATER TEMPERATURE: 48°F +/- 4°F
 BTU DISCHARGE TO THE WATER: 24,964 BTU/HR
 WATER PRESSURE: MAX 87 PSI
 LOSS OF PRESSURE FOR SEP CABINET: 14.5 PSI MAX
 CHILLED WATER ACQTY RANGE: 5 PM TO 10 PM
 CHILLED WATER HARNESS: <250 PPM OIL/AM CARBONATE
 CHLORINE GAS CONCENTRATION: <200 PPM
 FILTRATION: 500 MM

- GENERAL SHEET NO.**
1. SEE Q1-501 AND Q1-502 FOR FIXED CASWORK DETAILS.
 2. SEE Q1-503 FOR MOBILE TABLE AND ADJUSTABLE SHELVING DETAILS.
 3. SEE Q1-504 FOR CONTROLLED ENVIRONMENT ROOM DETAILS.
 4. SEE Q1-504 FOR TYPICAL SNOZZEL, RESTRAINT AND DRYING RACK DETAIL.
 5. SEE Q1-505 FOR TYPICAL OVERHEAD SERVICE RACKS.
 6. SEE Q1-506 FOR TYPICAL SERVICE RACKS AND CONFIGURATIONS.



ENVIRONMENTAL CRITERIA:
 NOISE LEVEL: -77.9 dB
 TEMPERATURE: 70°F ± 5°F
 RELATIVE HUMIDITY: 40% - 60% 24/7
 MINIMUM FRESH AIR EXCHANGE RATE: 5 ACH
 EXHAUST AIR DIRECTLY TO OUTSIDE AT ≥ 6'-5" AFF

POWER REQUIREMENTS:
 VOLTAGE RANGE: 480 VAC ± 10% FOR ALL LINE AND LOAD CONDITIONS
 VOLTAGE BALANCE: 2% MAXIMUM DIFFERENCE BETWEEN PHASES
 LINE IMPEDANCE: 0.20 OHMS
 STANDBY POWER: 13 KVA
 HIGHEST AVERAGE POWER: 54 KVA
 MOMENTARY POWER: 140 KVA
 RECOMMENDED TRANSFORMER: 150 KVA
 RECOMMENDED UPS: 465 KVA
 MR SYSTEM OVERCURRENT PROTECTION: 175 A
 UPS SYSTEM OVERCURRENT PROTECTION: 200 A
 MAXIMUM ALLOWABLE VOLTAGE DROP AT MAXIMUM POWER: 6.0%

ROOM CRITERIA:
 ROOM CRITERIA: STATIONARY DISIPATIVE FLOORING, CEILING HEIGHT: 7'-3"
 LIGHTING: DC
 AND OXYGEN MONITORING SYSTEM WITH VISUAL/AUDIBLE ALARMS
 NO SMOKE DETECTORS ALLOWED.
 NO HALON ALLOWED.

ENVIRONMENTAL CRITERIA:
 NOISE LEVEL: -77.9 dB
 TEMPERATURE: 70°F ± 5°F
 RELATIVE HUMIDITY: 40% - 60% 24/7
 MINIMUM FRESH AIR EXCHANGE RATE: 5 ACH
 EXHAUST AIR DIRECTLY TO OUTSIDE AT ≥ 6'-5" AFF

POWER REQUIREMENTS:
 VOLTAGE RANGE: 480 VAC ± 10% FOR ALL LINE AND LOAD CONDITIONS
 VOLTAGE BALANCE: 2% MAXIMUM DIFFERENCE BETWEEN PHASES
 LINE IMPEDANCE: 0.20 OHMS
 STANDBY POWER: 13 KVA
 HIGHEST AVERAGE POWER: 54 KVA
 MOMENTARY POWER: 140 KVA
 RECOMMENDED TRANSFORMER: 150 KVA
 RECOMMENDED UPS: 465 KVA
 MR SYSTEM OVERCURRENT PROTECTION: 175 A
 UPS SYSTEM OVERCURRENT PROTECTION: 200 A
 MAXIMUM ALLOWABLE VOLTAGE DROP AT MAXIMUM POWER: 6.0%

ROOM CRITERIA:
 ROOM CRITERIA: STATIONARY DISIPATIVE FLOORING, CEILING HEIGHT: 7'-3"
 LIGHTING: DC
 AND OXYGEN MONITORING SYSTEM WITH VISUAL/AUDIBLE ALARMS
 NO SMOKE DETECTORS ALLOWED.
 NO HALON ALLOWED.

ENVIRONMENTAL CRITERIA:
 NOISE LEVEL: -77.9 dB
 TEMPERATURE: 70°F ± 5°F
 RELATIVE HUMIDITY: 40% - 60% 24/7
 MINIMUM FRESH AIR EXCHANGE RATE: 5 ACH
 EXHAUST AIR DIRECTLY TO OUTSIDE AT ≥ 6'-5" AFF

POWER REQUIREMENTS:
 VOLTAGE RANGE: 480 VAC ± 10% FOR ALL LINE AND LOAD CONDITIONS
 VOLTAGE BALANCE: 2% MAXIMUM DIFFERENCE BETWEEN PHASES
 LINE IMPEDANCE: 0.20 OHMS
 STANDBY POWER: 13 KVA
 HIGHEST AVERAGE POWER: 54 KVA
 MOMENTARY POWER: 140 KVA
 RECOMMENDED TRANSFORMER: 150 KVA
 RECOMMENDED UPS: 465 KVA
 MR SYSTEM OVERCURRENT PROTECTION: 175 A
 UPS SYSTEM OVERCURRENT PROTECTION: 200 A
 MAXIMUM ALLOWABLE VOLTAGE DROP AT MAXIMUM POWER: 6.0%

MATCHLINE FOR CONTINUATION SEE: 1/01-1018